

AUSTRALIAN SHOP OUR KITCHEN FINDS TILES, STONE, TAPWARE AND APPLIANCES

# HOUSE & GARDEN

## *Kitchen* CHARISMA

FRESH LOOKS FOR YOUR DREAM SPACE

**EASTER ENTERTAINING**

*Cook our delicious long weekend menu*



ART FOR *every* ROOM  
Our gallery of affordable pieces



## *Entertaining*

- 47 **Easter Table Feast** in style with this menu from The Cordony Kitchen.

## *Houses*

- 20 **Island Dreaming** Creative force Kara Rosenlund curates a sunlit home for her young family.
- 64 **Fresh Coat** Walls in pretty shades of blue, blush and green give this terrace a much-needed refresh.
- 74 **Heritage Blues** Opulent accents and materials enrich a seaside manor.
- 90 **Natural Fit** Rustic notes balance a contemporary country abode.
- 102 **Seaside Revival** Eclectic, vintage style meets modern interiors with a nod to the Mediterranean.
- 116 **New Leaf** Innovative planning and timeless selections make a humble terrace realise its full potential.
- 128 **Small Wonder** A heritage house proves bigger isn't always better.
- 138 **Charm Factor** Playful art, a classic colour palette and elegant design reimagine a family home.

## *Gardens*

- 152 **Bay Watch** A coastal garden beautifully complements coveted cliffside views.
- 158 **The Perennial Garden** Mike Booth shares secrets to planning a garden that evolves each season.

## *Kitchen special*

- 163 Revamping the busy heart of the home is no easy feat, but this array of elegant kitchens proves that prudent planning, teamed with design nous, achieves fabulous results.

## *For our readers*

- 8 **Subscribe** to *H&G* this month and receive a set of Luigi Bormioli 'Sublime' wine glasses.
- 18 **Privacy Notice**
- 19 **Your *H&G* Readers' letters.**

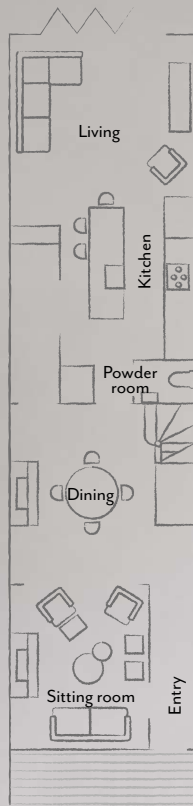


### **On our cover**

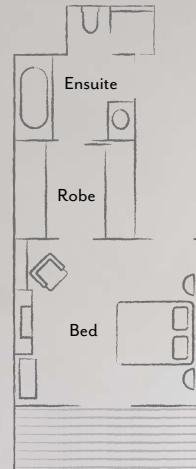
This classic kitchen by KWD draws on oak and brass notes for refined character. Captured by Armelle Habib, and styled by Julia Green and Jade Lee Martin. More on page 74.

## THE LAYOUT

### Ground floor



### First floor



**ENSUITE** Walls finished in Marmorino plaster. Joinery painted Dulux Bongo Drum. London blinds, Marlow & Finch. 'Ana' wave side table, Chelon. Soap dish, Ignem Terrae Ceramics. Selenis stone benchtop, Artedomus. Bath, Duravit. Towels, Oliver Thom. Floor tiles, Inigo Jones & Co.



# HERITAGE *blues*



Historic character blends beautifully with contemporary design to create a romantic interior scheme in this grand seaside manor.

STORY *Judy Pascoe* | STYLING *Julia Green & Jade Lee Martin* | PHOTOGRAPHY *Armelle Habib*





Photography assistant Sara Wilkosz. Stylists' assistants Natalie Petrovski and Nikki McGar. Staging by Cate Expectation.



**EXTERIOR** The house on Victoria's Mornington Peninsula is a new build designed to resemble an established manor-style home. Brickwork painted Dulux Spanish Olive. Timber painted Dulux White Cloak Half. **ENTRY** *Above* Walls painted Porter's Paints Moorehen and Dulux White Cloak Quarter. Custom bench seat by KWD upholstered in Mulberry Home 'Game Birds' linen in Charcoal, Elliott Clarke. Walter G 'Nori Elm' linen cushion, Rose St Trading. Cushions, Icon Radford. Beach bag, Pan After.



With its traditional manor-style facade, luxury inclusions and sprawling size this Mornington Peninsula home was created with the goal of taking elegance and attention to detail to new heights. Conceived by interior designer Kate Walker of KWD, along with Cahill Building Group, the property occupies a 1000sqm corner site in an idyllic seaside neighbourhood and offers tranquil views over Port Phillip Bay.

The project was designed as a traditional family home with five bedrooms and five

bathrooms, three living areas, a lift and a pool set in landscaped gardens. “We wanted to establish a home reflective of an English gentleman’s seaside manor with a distinguished interior,” says Kate. “The facade was specifically designed to create a sense of age and history so the property looked like a renovation rather than a new build.”

With its bright, white-painted brick, gabled roofline and high fence, the exterior promises refined grandeur within and the interior does not disappoint. Throughout the expansive home, a white backdrop and Italian oak floorboards are complemented by tessellated tiles in breakout areas ▶







**FAMILY ROOM** Thomas O'Brien chandelier, The Montauk Lighting Co. *Green Dragon Red Lantern* artwork by Peter Summers. Sofa, armchair and black side table, all Robertsons. Cushion, Icon Radford. Coffee table, Coco Republic. Ceramics by Belinda Wiltshire, Makers' Mrkt. Arteriors tray, Boyd Blue. Rug, Cadrys. **KITCHEN** Joinery in oak and painted Dulux White Cloak Hall, DMA Kitchens. Tiles, benchtop, oak flooring, all KWD & Co. E. F. Chapman pendants, The Montauk Lighting Co. Perrin & Rowe pot-filler tap, The English Tapware Company. Stools, WGU Design. Rug, Cadrys. Vase, Rachel Donath.







“It has the essence of a distinguished English seaside manor with all the convenience of a contemporary build.”

KATE WALKER, INTERIOR DESIGNER



**FAMILY ROOM** Thomas O'Brien chandelier and pendant light, The Montauk Lighting Co. 'Paxton' dining table, Schots Home Emporium. Kinloch sofa, white armchair, side tables, and dining chairs, all Robertsons. Blanket, Citta. Armchairs; GlobeWest. Cushions, Icon Radford. 'Bleeker' coffee table, Coco Republic. Ceramics by Belinda Wiltshire, Makers' Mrkt. Arteriors 'Odin' tray, Boyd Blue. Vintage rugs, Cadrys. On dining table Vase, eModerno. 'Wilber' bowl, Boyd Blue.









**THIS IS THE LIFE**

The orientation is one of the most successful aspects of the property, with the home capturing views to the north and west, and natural light flooding in year-round. A sun-splashed pool, adjoining barbecue pavilion and manicured gardens offer the perfect combination of alfresco entertaining and relaxation space. Inside, convivial occasions can be enjoyed with family and friends in the expansive family room, intimate bar or living area.



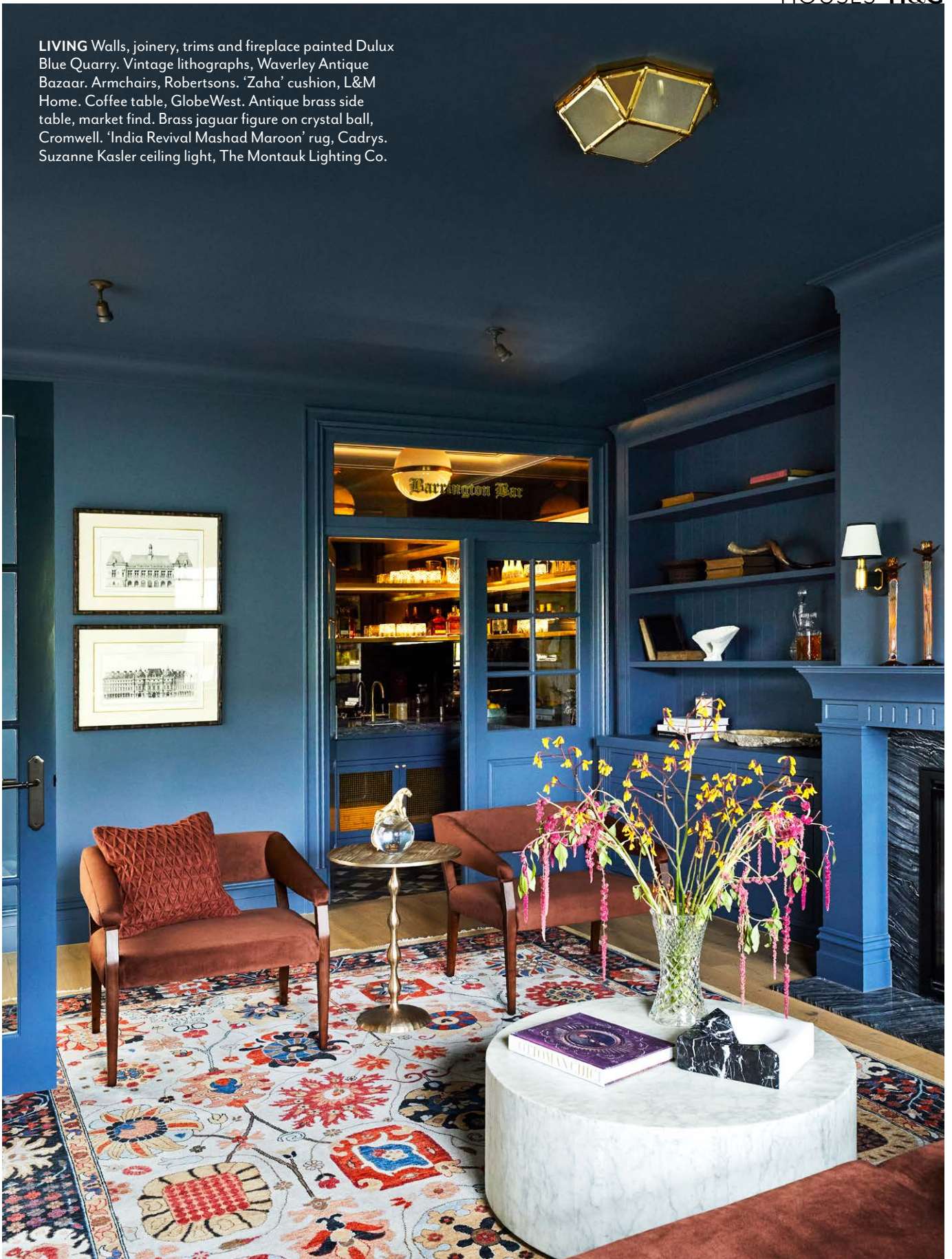
**EXTERIOR** *Top* Brickwork painted Dulux Spanish Olive. Timber painted Dulux White Cloak Half. A barbecue pavilion is nestled in gardens designed by Plume. Outdoor dining chairs, Temple & Webster. Louise Roe 'Balloon Vase 03', Designstuff. 'Luca' crazy paving, Eco Outdoor. **STAIRWAY** *Bottom left* Ralph Lauren Home 'Riley' chandelier, and Thomas O'Brien 'Hulton' wall sconces, The Montauk Lighting Co. Console, Robertsons. Vintage Persian rug, Cadrys. Mahogany and brass table, Boyd Blue. Hayward Prussian flatweave stair runner, and 'Como' engineered Italian oak floorboards, all KWD & Co. *On table* Large vase and platter, both Cromwell. Studio Mulders vase, Pépité. **LAUNDRY** *Bottom right* Joinery painted Dulux Moorehen, DMA Kitchens. Carrara marble benchtop, and floor tiles, all KWD & Co. 'Halifax' joinery handles, Hepburn Hardware. 'Novi' sink, Turner Hastings. Perrin & Rowe mixer, The English Tapware Company. E. F. Chapman 'Boston' wall lights, The Montauk Lighting Co. **PANTRY** *Opposite* Joinery painted Porter's Paints Moorehen, DMA Kitchens. Carrara marble benchtop and floor tiles, all KWD & Co. Vintage artwork, Waverley Antique Bazaar.







LIVING Walls, joinery, trims and fireplace painted Dulux Blue Quarry. Vintage lithographs, Waverley Antique Bazaar. Armchairs, Robertsons. 'Zaha' cushion, L&M Home. Coffee table, GlobeWest. Antique brass side table, market find. Brass jaguar figure on crystal ball, Cromwell. 'India Revival Mashad Maroon' rug, Cadrys. Suzanne Kasler ceiling light, The Montauk Lighting Co.



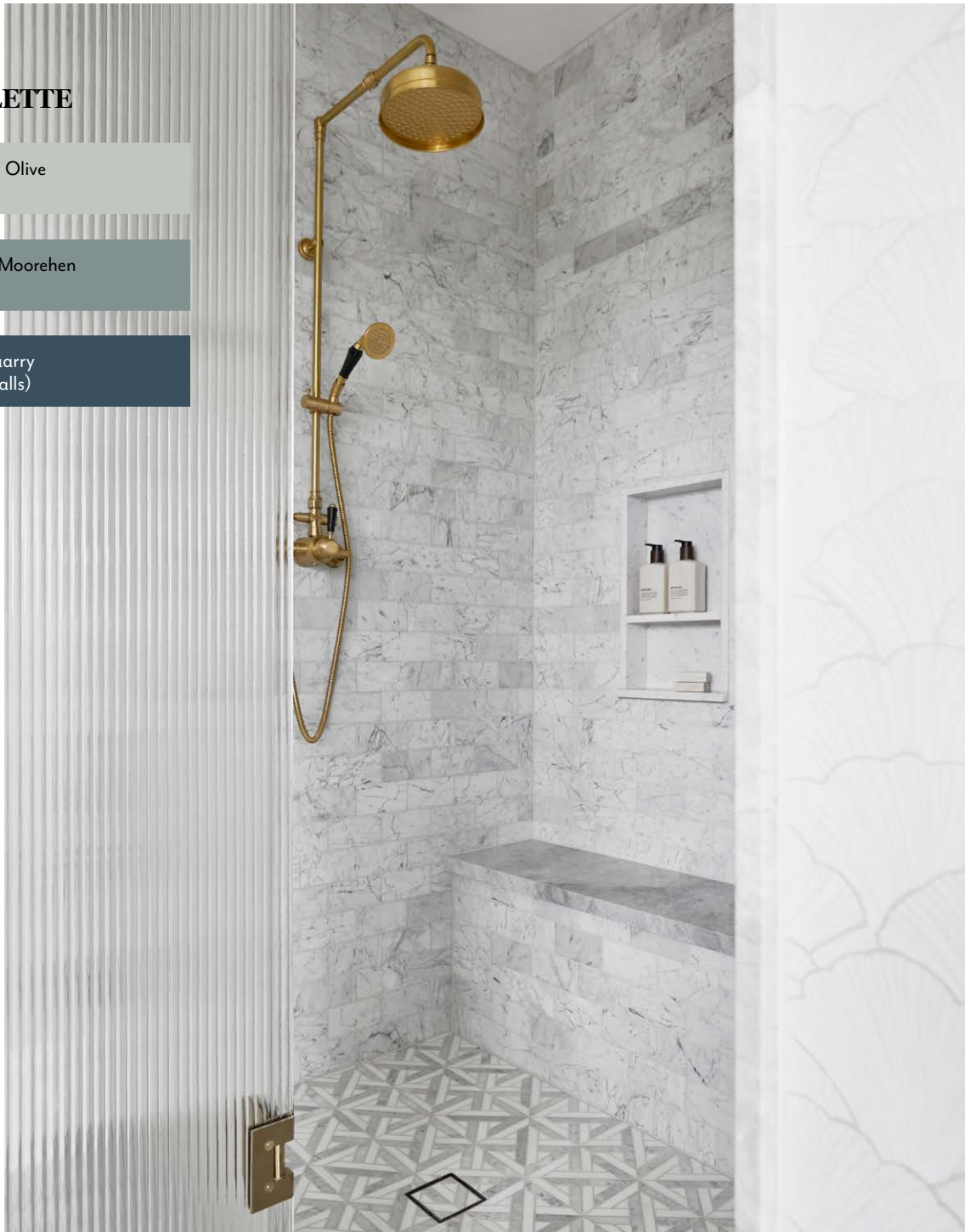


**THE PALETTE**

Dulux Spanish Olive  
(exterior)

Porter's Paints Moorehen  
(entry walls)

Dulux Blue Quarry  
(living room walls)



**ENSUITE** Carrara honed marble wall tiles, marble mosaic floor tiles, and Versilia marble slab step, all KWD & Co. Perrin & Rowe shower set in Satin Brass, The English Tapware Company. **MAIN BEDROOM** *Opposite* Bedhead, McMullin & Co. 'Clifton' bedside table, and 'Daphne' tray, Boyd Blue. 'Lake Agawam' table lamp, Cromwell. Iittala 'Alvar Aalto' vase, Designstuff. 'Palermo' French linen bed linen in Sage, L&M Home. Cotton velvet cushion in Sage, Città. Antique zebra ottoman, Ralph Lauren Home. Rug, Cadrys. Tunstall Sisal large loop pile carpet, KWD & Co.

Paint colours are reproduced as accurately as printing processes allow.



and shades of blue. Marble benchtops and tiles, and custom joinery add luxury, while brass light fixtures, hardware and *objets d'art* offer a historical link. Soaring multi-paned windows admit lashings of light everywhere and in the bathrooms whimsical wallpapers spark joy. A two-way fireplace in the living area links indoors and out, and adds a contemporary note.

The entry hall leads into the vast family living, dining and kitchen area with its seamless connection to the outdoors. Flooded with light, it is a foil for the formal living room and bar on the opposite side of the entry. This is the perfect spot for evening cocktails in front of the fireplace, with an intimate club vibe created by way of the moody blue walls, plush tan seating, a vintage Persian rug and collectables.

“The home has a masculine flavour brought to life with a mixed materiality,” says Kate. “There is a refined attention to detail in every space.” Leather details reinforce the masculine edge.

Outside, the generous site has been enhanced by landscaping studio Plume to complement the manor-esque feel of the home with mature plantings. Areas for entertaining and relaxation are dotted around the property, including a barbecue pavilion and pool terrace.

The accommodation wing on the upper floor includes a spectacular, spacious main bedroom with a fireplace, views to the bay, a dressing room, marble ensuite and custom coffee room. Downstairs, the ground floor guest bedroom has its own entrance and a separate kitchenette.

Developer Steve Cahill of Cahill Building Group says the architectural style of the home complements the surrounding area and blends in without being imposing. “It sits very comfortably in the streetscape. The home has a sense of softness while maintaining an innate grandeur.”

For Kate, one of the highlights is that the house captures coastal views from every room bar one. “It has the essence of a distinguished English seaside manor with all the convenience of a contemporary build. There is a feeling of romance and nostalgia as you walk through the front gates, with the interior offering a comfortable lifestyle for a large family.” ▶

**KWD:** [katewalkerdesign.com.au](http://katewalkerdesign.com.au).

**Cahill Building Group:** [cahillbg.com.au](http://cahillbg.com.au).

**Plume:** [plumestudio.com.au](http://plumestudio.com.au).





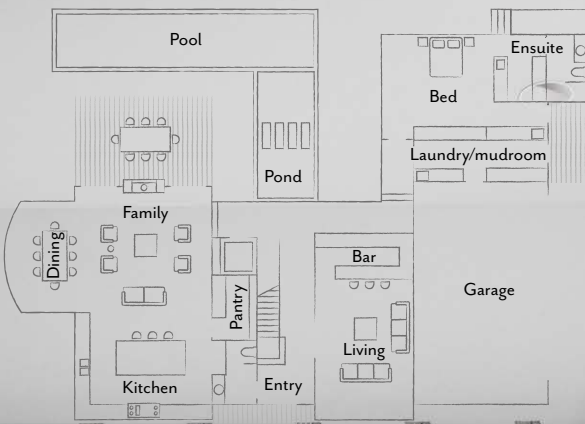


**BEDROOM** *Above left* Bedhead, McMullin & Co. Walter G cushion. Throw, Icon Radford. Bedside table, Cromwell. Lamp, Cafe Lighting & Living. Studio Mulders vase. Blind and curtain, Lynch's Window Fashions. Rug, Cadrys. **BATHROOM** *Above right and opposite* Joinery painted Dulux Vipere. Milola 'Argonaut Shell' wallpaper, Elliott Clarke. Studio 1 bath. Perrin & Rowe tapware. Handles, Hepburn Hardware. Wall lights, The Montauk Lighting Co. Blind, Lynch's Window Fashions. Benchtop and tiles, KWD & Co. **ENSUITE** *Bottom right* Joinery painted Dulux Blue Steel. Tiles, KWD & Co. Victoria + Albert bath. **BATHROOM** *Bottom left* Walls painted Dulux Milky Spearmint. Joinery painted Dulux Vipere. Milola 'Going Swimmingly' wallpaper, Elliott Clarke. Wall lights, The Montauk Lighting Co. Mirror, Turner Hastings. Basin and tapware, both The English Tapware Company.

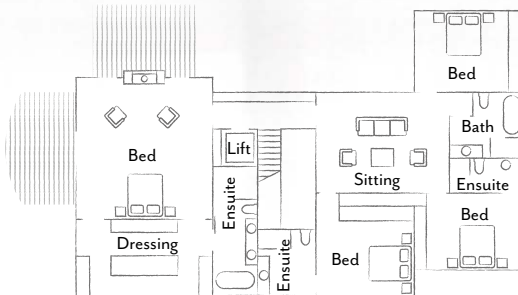


# THE LAYOUT

Ground floor



First floor





**POOL** Java Blue ceramic mosaic pool tiles, KWD & Co. Landscaping and pool design by Plume.







## THE SOURCE

*Curate a selection of heritage-inspired pieces to conjure a sense of romance and nostalgia in your home.*



1 Thomas O'Brien 'Piaf' Grande **chandelier**, \$2290, The Montauk Lighting Co. 2 'Finley' **shower rail set** in Brushed Brass, \$709.90, ABI Interiors. 3 'Kenis' **rectangle tray**, \$1240, Boyd Blue. 4 'Acquario' **wallpaper** in Soft Aqua, \$773/10m roll, Wallpaperdirect. 5 'Kennedy' wrap **occasional chair** in Bone Weave, \$2135, GlobeWest. 6 'Modernist' **floor lamp**, \$590, Domo. 7 'Helene' cotton and linen **cushion** in Clay, \$99, L&M Home. 8 The Water Monopoly 'Hanley' **bath** in Snowdrop White, \$16,240, The English Tapware Company. 9 'Cabas' **vase**, \$1590, Rachel Donath. 10 Persian Ghom silk **rug** (200x120cm), \$26,400, Cadrys. **H&G**